



S O F I T E L
HOTELS & RESORTS
PARIS BALTIMORE TOUR EIFFEL

Live the French way

Designed by Girós & Coutellier formerly (ex Les Deux Ailes)
and inspired by Gustave Eiffel.

LUXURY - ICONIC - HISTORY
in the most beautiful district of Paris.

The classic six-story Haussmannian façade exudes a truly unique
architectural aesthetic.

Thanks to its unique character,
the Sofitel Paris Baltimore Tour Eiffel stands out in its neighbourhood
in the heart of chic Paris.



88 bis avenue Kléber - 75116 PARIS - FRANCE
T. +33 (0)1 44 34 54 54 - h2789@sofitel.com
www.sofitel-paris-baltimore.com



OUR LOCATION

Ideally located between the Eiffel Tower and the Champs-Élysée.

The 16th arrondissement is the ultimate stomping ground for living the good life and soaking up the charm of Paris.

Museums, shopping places, historical monuments are just steps from the hotel.

YOUR PARISIAN HOUSE


103 rooms including 28 suites

Family trip :16 connecting rooms up to 8 people

Personalized service with Concierge and Guest Relation services

Sofitel MyBed concept

Balconies with wrought-iron balustrades and elegant red geraniums

Amenities in rooms  **BALMAIN**
PARIS

Contemporary and intimate atmosphere

Feel at home in the heart of Paris





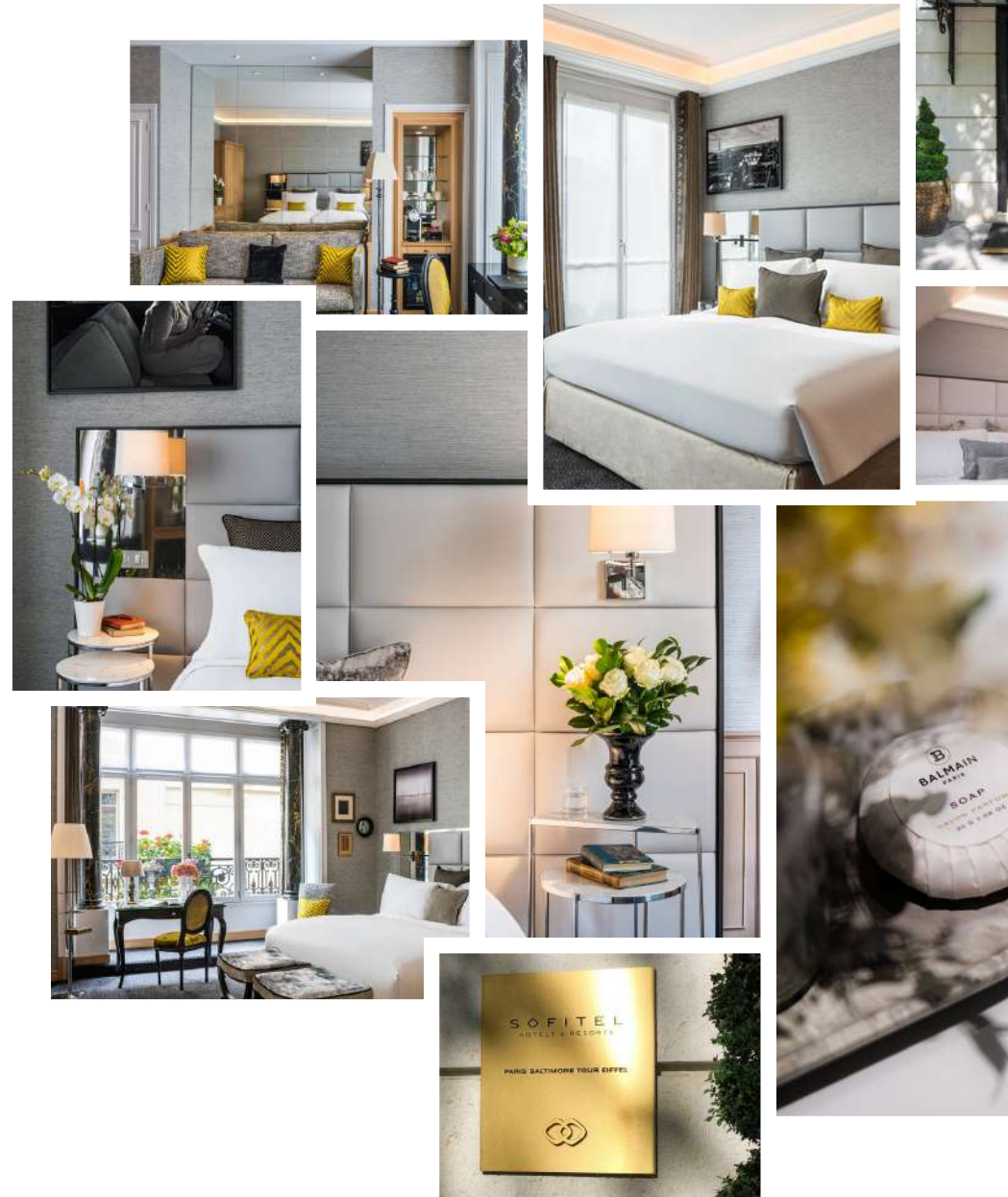
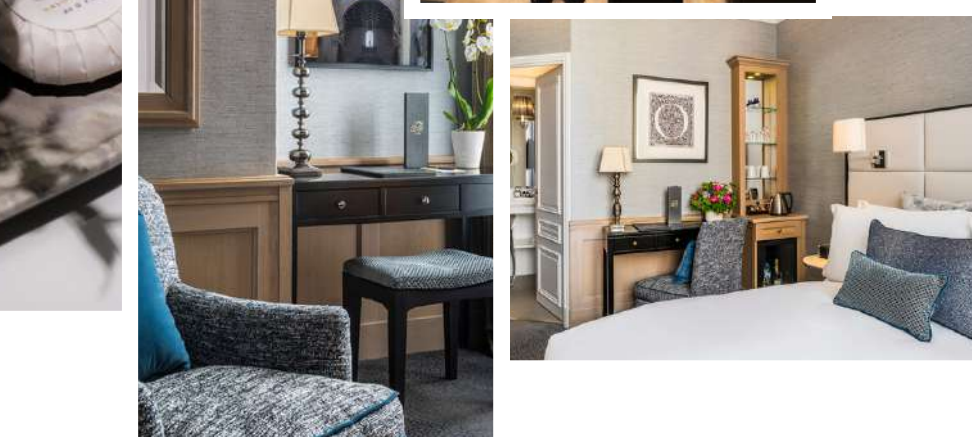
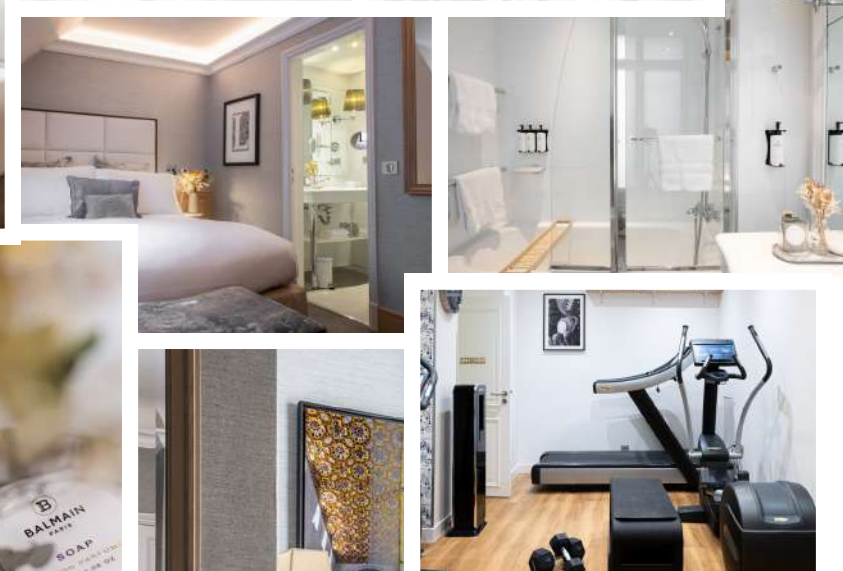
ENJOY OUR RELAXING AMBIENCE

Modern and luxury design

Intimate and luminous lobby

Library and fireplace for tea time

Green terrace in summer





YOUR GASTRONOMIC EXPERIENCE

LORDY'S PARIS CLUB

At Lordy's Paris Club you'll feel right at home.

Genuine dishes from London to New-York accurately reveal product essence, sublimated by French culinary techniques.

1

LUNCH AND DINNER MENU

Seasonal products

80%

FRENCH CUISINE WITH AN ANGLO-SAXON TWIST

Recipes inspired by Lordy's three favourite cities :
London, Paris, New York

20%

SHOW COOKING

Presentation at the table

65

SEATS

Possible privatisation



BAR

- 1 CONTINUOUS SERVICE // 9AM - MIDNIGHT
Seasonal products.
- 50% FRENCH CUISINE
WITH AN ANGLO-SAXON TWIST
Recipes inspired by Lordy's three core cities:
London, Paris, New York.
- 50% SIGNATURE COCKTAIL EXPERIENCE
Classic with a twist.
- 40 SEATS
Possible privatisation.





TERRACE

Between the Champs-Élysées and the Eiffel Tower,
the green terrace of Lordy's Paris Club
welcomes you throughout the summer season.

36

SEATS

Possible privatisation



YOUR MEETING EXPERIENCE

4 private rooms up to 90 persons - All menus are designed by our Chef - Prefect location for your meetings and events with catering - All-inclusive daily delegate packages



Eiffel


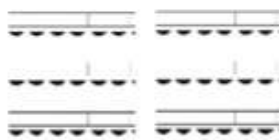

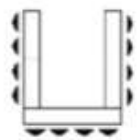
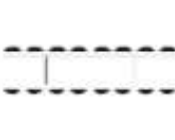
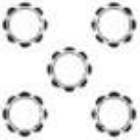



Trocadero



Kléber/ Foch

MEETING ROOM CAPACITIES

SALONS/MEETING ROOMS	SURFACE M²	THEATRE	SALLE DE CLASSE/CLASSROOM	CABARET	TABLES U/ U-SHAPE	BOARDROOM	BANQUET	COCKTAIL
								
TROCADERO	102 (12X8,5)	90	60	40	34	32	60	120
KLEBER	40 (6,0X6,5)	30	24	-	16	18	27	30
FOCH	30 (5,5X5,5)	20	15	-	10	12	18	20
KLEBER & FOCH	70 (6,0X12,0)	40	-	-	-	-	45	70
EIFFEL	45 (9,5X4,5)	-	-	-	-	16	-	-
SUITE SIGNATURE EIFFEL	17,3 (3,0X5,8)	10	-	-	-	8	8	20
RESTAURANT	90	-	-	-	-	-	60	100
CAVE À VIN/ WINE CELLAR	14 (3,4X4,0)	-	-	-	-	-	-	20
BAR	32	-	-	-	-	-	-	50



SOFITEL
HOTELS & RESORTS
PARIS BALTIMORE TOUR EIFFEL

RESERVATION CONTACT

Reservation department
+33 (0)1 44 34 53 01
h2789-re@sofitel.com

88 bis avenue Kléber,
75116 Paris
+ 33 (0)1 44 34 54 54
www.Sofitel.com



sofitelparisbaltimore



Sofitel Paris Baltimore Tour Eiffel



Sofitel Paris Baltimore

